

Assembling the Cedar Garden Chairs

Model: WRFFBBSETCVD

The item can be found on
www.CedarwoodFurniture.com

Call 877-595-8537 to order

Tools needed for assembly:

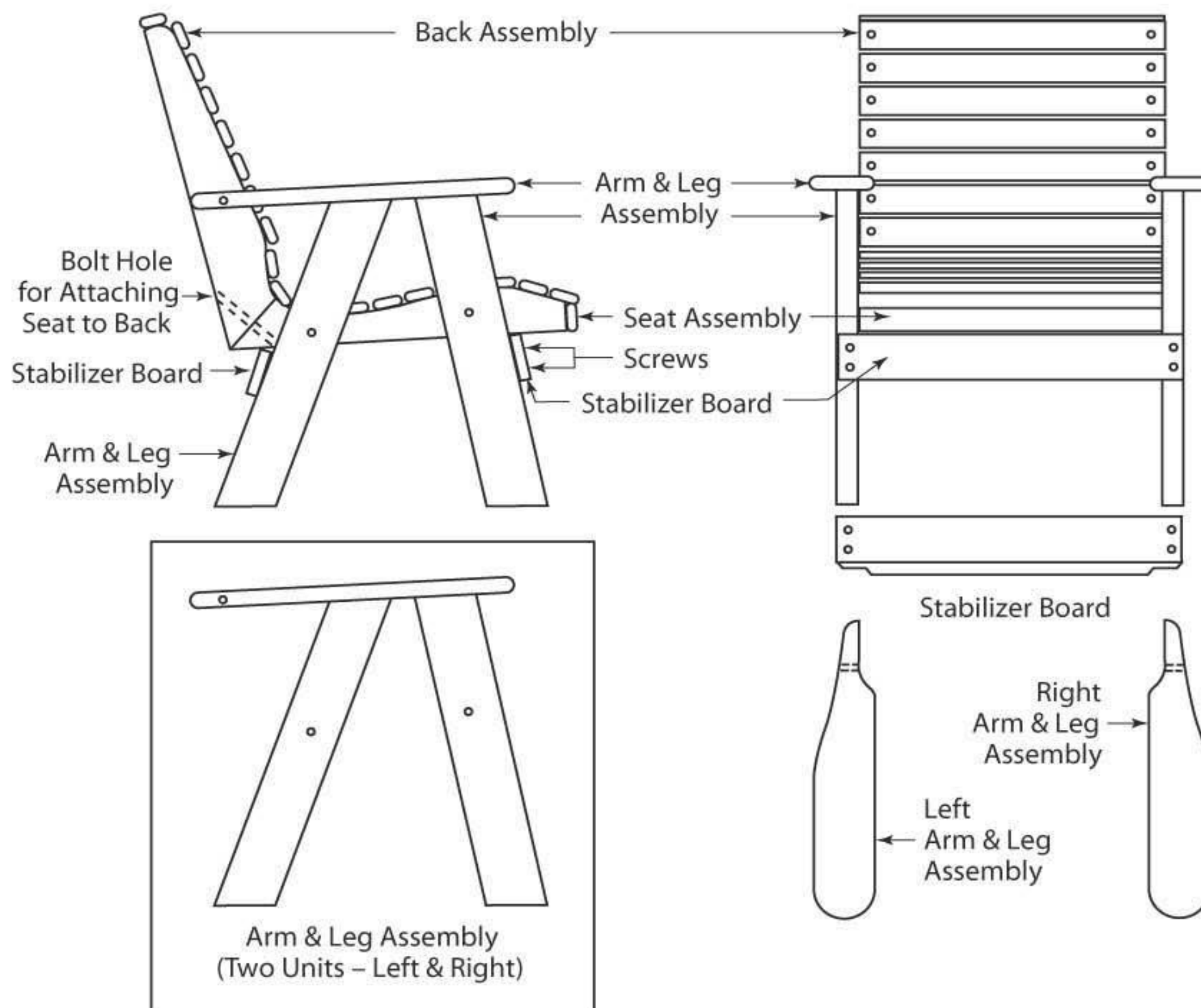
Drill.

Pliers and/or 7/16" wrench

Hammer for tapping bolts and screws.

- Step 1 Lay out all the parts and identify them by comparing them with the drawings.
- Step 2 Bolt the seat and back assemblies together with the 5-1/2" bolts. Using small washers on each end of the bolts. Put (1) small washer on bolt before sliding through back and seat then use other small washer on the end, then add the 1/4" nut.
- Step 3 Fasten the Arm & Leg Assemblies to the seat with the 3" bolts. Put a large washer on each end of the bolts. Put (1) large washer on bolt then slide through leg from outside ... then through seat. Add the other large washer then 1/4" nut and hand tighten. Fasten the arms to the back with the two 3" carriage (smooth head) bolts. Use a small washer under the 1/4" nut only.
- Step 4 Attach one stabilizer board to the front legs, and up against the bottom of the seat, with four short screws, turning it so the notches fit over the legs. Do the same with the other stabilizer board to the back of the back legs in the same manner.
- Step 5 *For the Royal Highback and American Sweetheart chairs only.* Lay the chair on its back and attach the appropriate 5" wide boards to the back. and on the Highback, also to the front of the seat. Use the 1-5/8" screws provided, keeping the same space between the board and the next slat, keep the same space between the rest of the slats.
- Step 6 Go back over your garden bench or chair and tighten all nuts with 7/16" socket, or pliers.
 - It may periodically be necessary to tighten screws and 1/4" nuts.

NOTE: DIAGRAMS BELOW SHOW AMERICAN CLASSIC CHAIR (WF3130)



Part List for Garden Chairs

- 1 – Back Assembly
- 1 – Seat Assembly
- 2 – Arm & Leg Assemblies
- 2 – Stabilizer Boards
- 2 – 3" Carriage Bolts
- 4 – Trusshead Bolts
- 8 – Large Washers
- 8 – Small Screws
- 4 – Small Screws (American Sweetheart only)
- 8 – Small Screws (Royal Highback only)
- 1 – Sweetheart Board (Sweetheart style only)
- 2 – 5" Wide Boards (Highback Style only)

Assembly Instructions for the Round Trestle Table

Items: WRFFBBSETCVD, WRFCHBSETCVD

Tools needed for assembly:

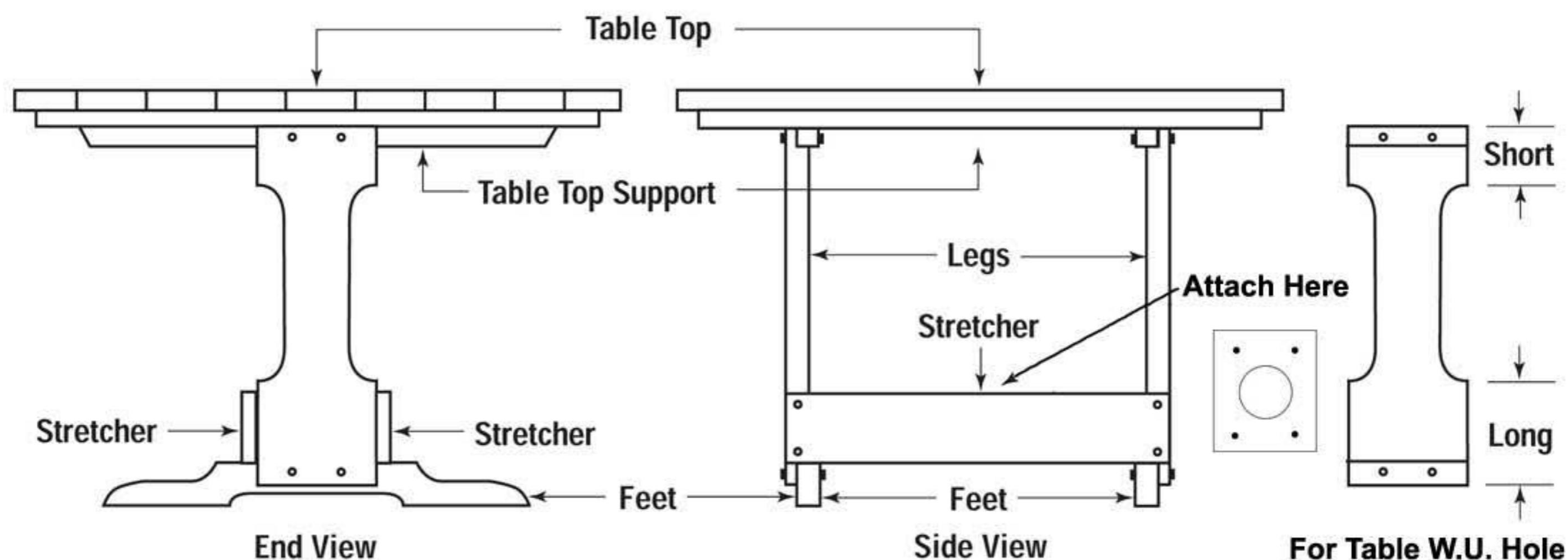
Square head screwdriver or drill.

Pliers or 1/4" socket set.

Hammer for tapping bolts and screws.

Drill and 1/8" or 5/32" drill bit.

- Step 1** Lay out and identify all the parts and pieces. Note: The legs, feet, and stretchers for the benches are very similar to the table parts, only smaller and there are 4 X as many.
- Step 2** Lay the table top upside down on a clean flat surface and attach the legs to the table top supports. Keep the legs on the out side of the table top supports and the notch in the legs is turned inward (shown in the picture). Make sure that the short end of the leg is fastened to the top support. Fasten with 4 – 2-1/2" Hex Head Bolts. Place a washer under the head and the nut. Tighten.
- Step 3** Stand the Table upright. Place the wide stretchers with the notches over the legs, down tight against the feet. Predrill holes with 1/8" or 5/32" drill bit. Make sure that the legs are pulled in tightly against the notches in the stretchers, then fasten with the Hex Lag Screws through the pre-drilled holes. Use a washer under the head of the Lag screws. Be careful not to over tighten the screws. (over tightening the lag screws will cause the holes in the legs to become larger, and then they can't be tightened at all)
- Step 4** Assemble the 4 benches in the same manner only using the smaller legs, feet, and stretchers. Always make sure that the feet are on the long end of the legs so that there is room for the stretchers along the flat part of the legs above the feet.
- Step 5** After your table and benches are assembled please go back and make sure all the screws are tight.



Parts for the Round Trestle Table

- 1 – Table top
- 2 – Legs (large)
- 2 – Feet (large)
- 2 – Stretchers (wide)

Parts for the Benches

- 4 – Bench tops
- 8 – Legs (small)
- 8 – Feet (small)
- 8 – Stretchers (narrow)

Hardware

- 40 – 1/4" x 2 1/2" Hex Head Bolts
- 40 – 1/4" x 2 1/2" Hex lag Screws
- 40 – 1/4" Nuts
- 120 – 1/4" x 1" Washers